

# BREAKERS WEST PLAT NO. 18

"PART OF A PLANNED UNIT DEVELOPMENT"

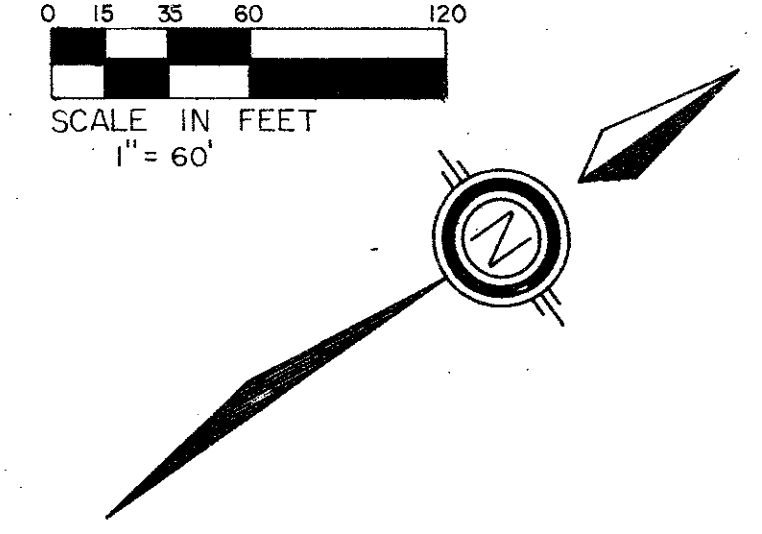
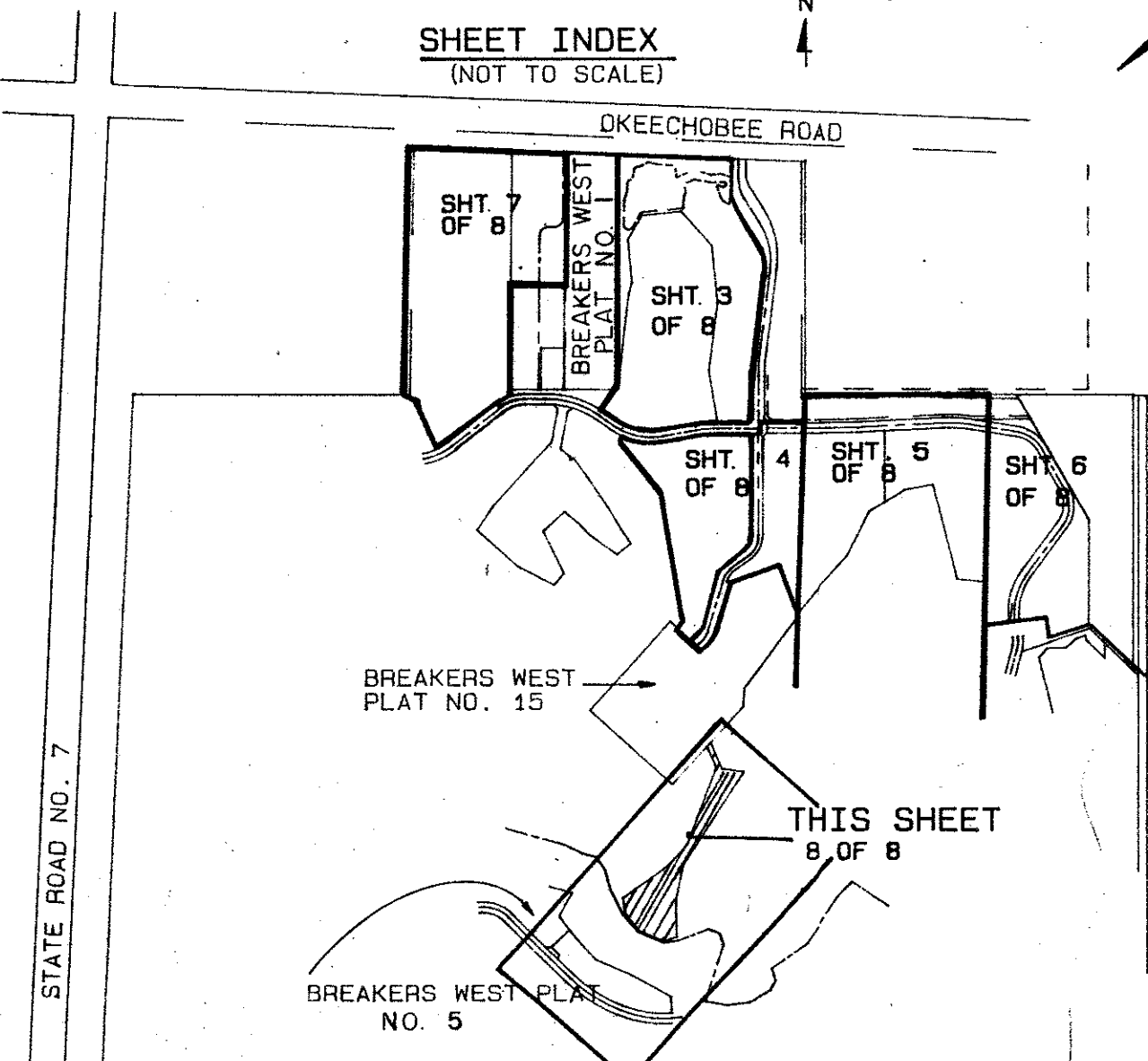
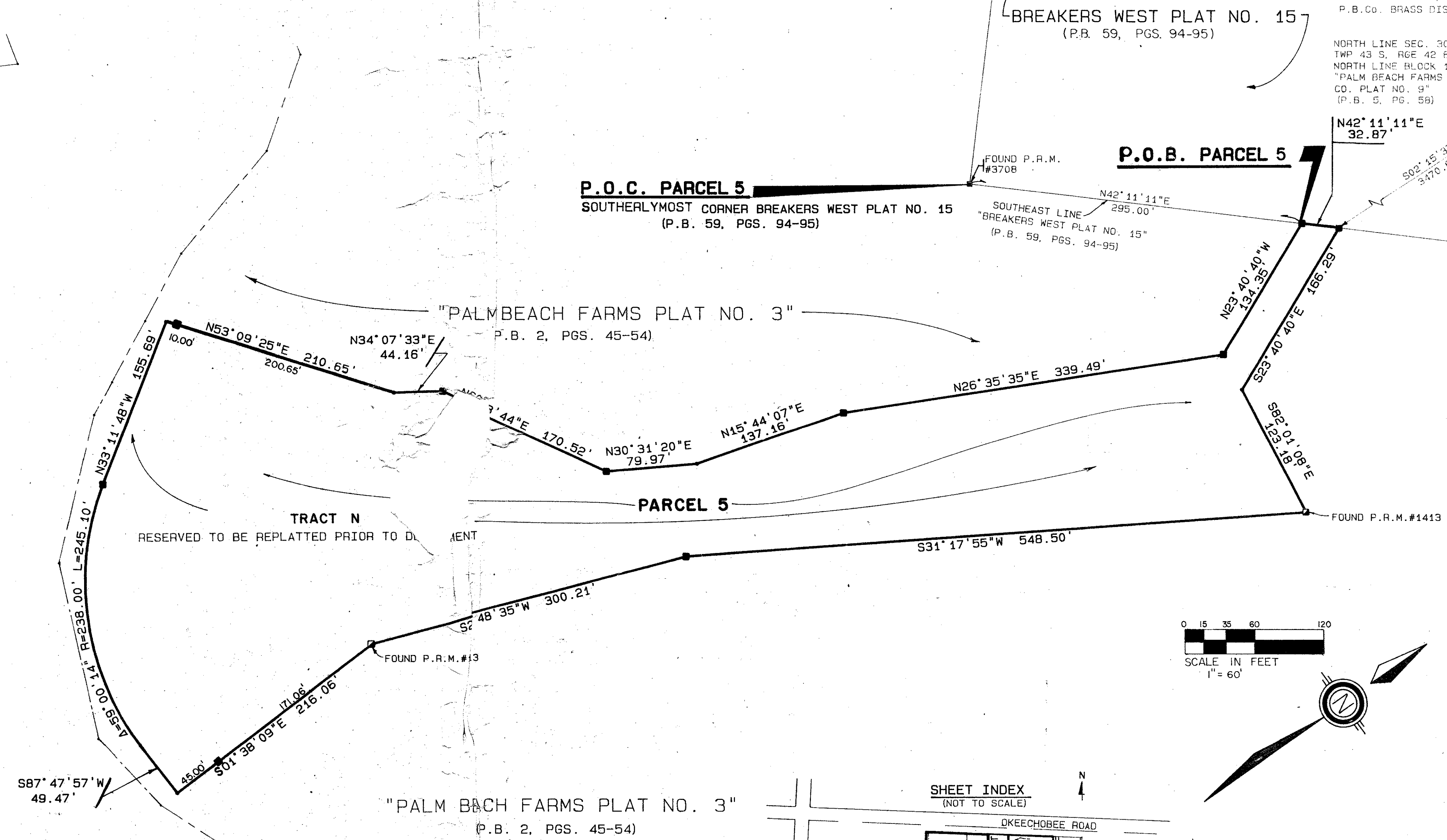
BEING A REPLAT OF A PORTION OF TRACTS 1, 4, AND 5, BLOCK 1, AND TRACTS 2, 3, 4, AND 10, BLOCK 2 OF PALM BEACH FARMS COMPANY PLAT NO. 3 (P.B. 2 PG. 45-54) AND A PORTION OF LOTS 4, 5, 6, AND 7, BLOCK 1, PALM BEACH FARMS COMPANY PLAT NO. 9, (P.B. 5 PG. 58.) SITUATE IN SECTIONS 29 AND 30, TOWNSHIP 43 SOUTH, RANGE 42 EAST, PALM BEACH COUNTY, FLORIDA, 1990 SHEET 8 OF 8

0217-015

# 194

STATE OF FLORIDA  
COUNTY OF PALM BEACH  
THIS PLAT WAS FILED FOR RECORD  
THIS \_\_\_\_\_ DAY OF \_\_\_\_\_  
AND DULY RECORDED IN PLAT BOOK \_\_\_\_\_ ON PAGES \_\_\_\_\_ AND \_\_\_\_\_  
BY: JOHN B. DUNKLE, CLERK  
D.C.

BREAKERS WEST BLVD.  
(P.B. 48, PGS. 6-9)  
"BREAKERS WEST PLAT NO. 5"  
(P.B. 48, PGS. 6-9)



TAL 817

APPROXIMATE Breakers West Plat No. 18  
PAGE 104  
FLOOD ZONE B  
ROAD # 416  
ZIP CODE 33411  
SUB NAME  
DATE

0217-015  
Pet. 13-219

67/194

**STANLEY CONSULTANTS OF FLORIDA, INC.**  
ENGINEERS • PLANNERS • SURVEYORS  
2000 LOMBARD STREET, WEST PALM BEACH, FL 33407 (407) 842-7444

DRAWN J.C.F. DATE JULY, 1989  
CHECKED SCALE 1"=60'  
DRAWING NO. D-12-100520PLAT

**BREAKERS WEST PLAT 18**  
A PART OF  
BREAKERS WEST P.U.D.